

Focus Flex L19



Light Efficiency:

15 Lumen/Watt

Light Quality:

CRI: 57.8

Color Temperature:

4283 K

Output: 3697 lm

Peak: 165786 cd

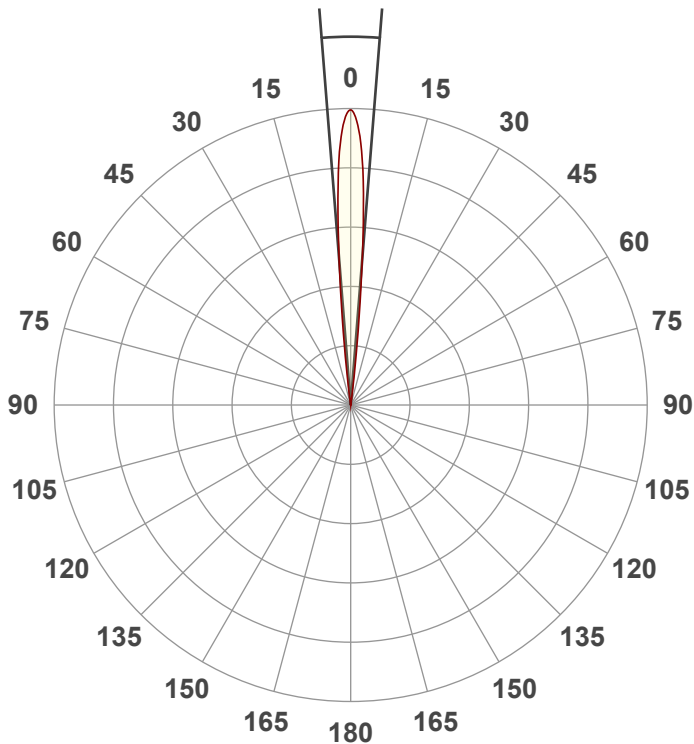
Power: 245 W

PF: 1.0



Beam Angle

9.1°



Test:

Lime Zoom 9

Date:

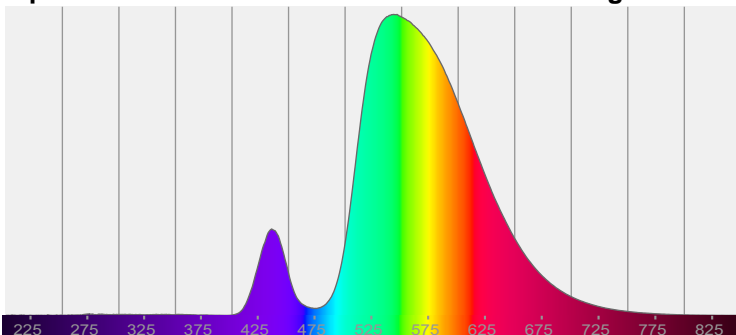
10/26/2022

Note:

CIE 1931
x: 0.398
y: 0.502

Spectra

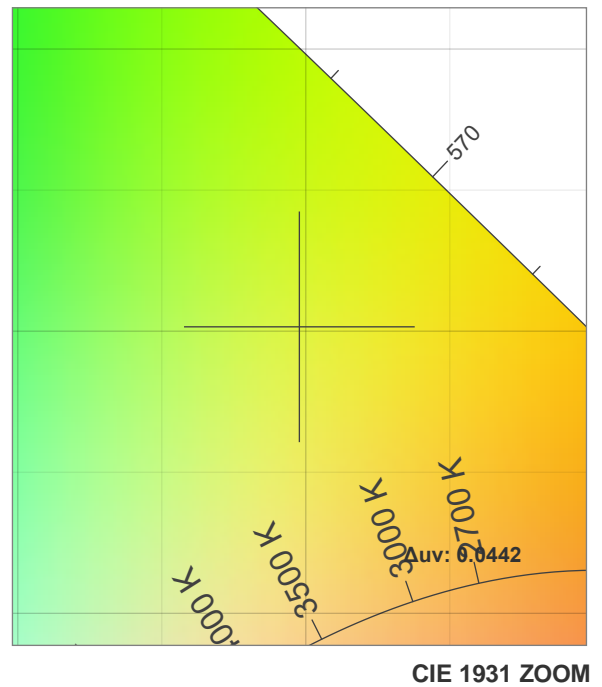
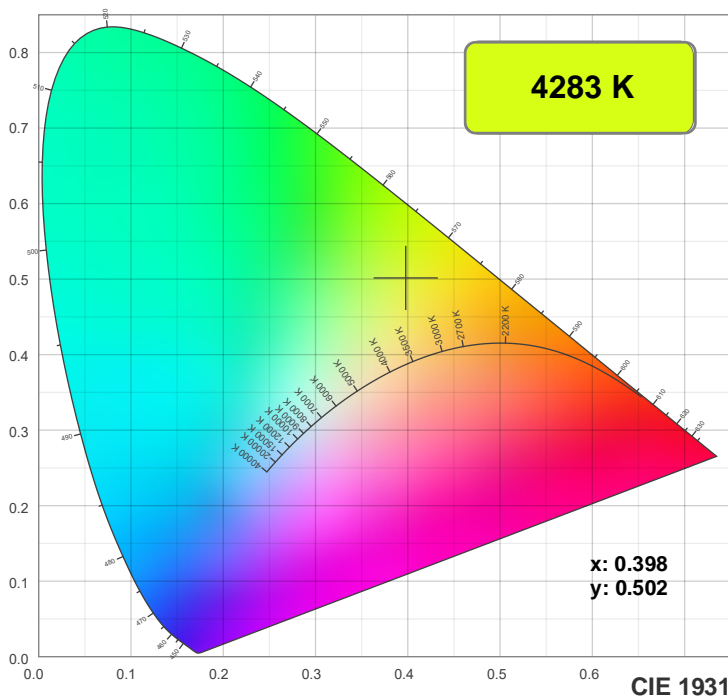
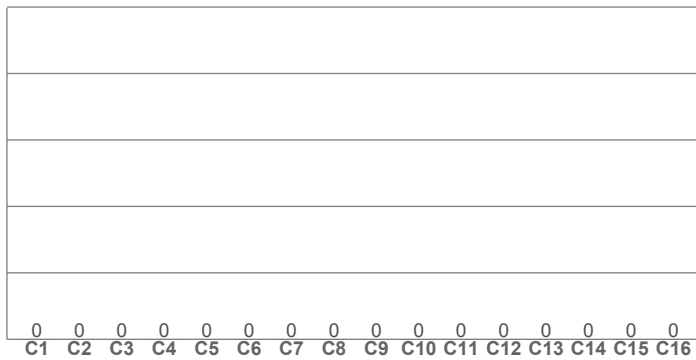
Dominant Wavelength: 568nm



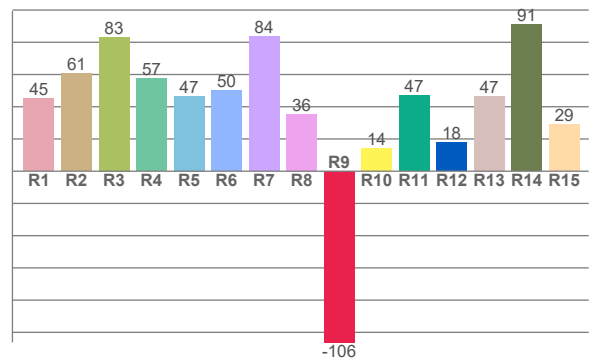
Power

Voltage: 115 V
Current: 2.12 A
Frequency: 0 Hz

Color Details

**TM30: 0.0**

CRI: 57.8 (R1-R8)



CRI R values, only R1-R8 are used to calculate final CRI value

R1	R2	R3	R4	R5	R6	R7	R8	R9	R10	R11	R12	R13	R14	R15
45.1	60.6	83.3	57.3	46.7	50.1	83.6	35.5	-106.2	14.4	46.8	18.0	46.6	91.0	29.1

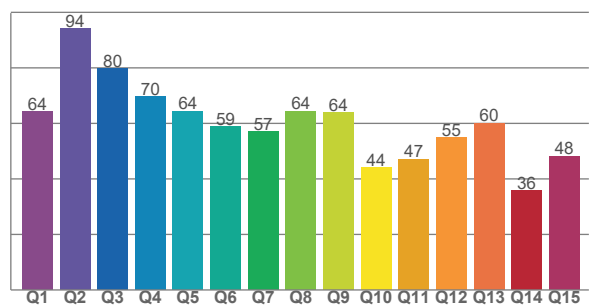
TM30 C values, 16 binned values out of total of 99 C values

[illegible]

CQS Q values

Q1	Q2	Q3	Q4	Q5	Q6	Q7	Q8	Q9	Q10	Q11	Q12	Q13	Q14	Q15
64.2	94.1	79.8	69.6	64.4	58.9	57.1	64.4	64.0	44.1	47.1	54.9	60.1	35.7	48.1

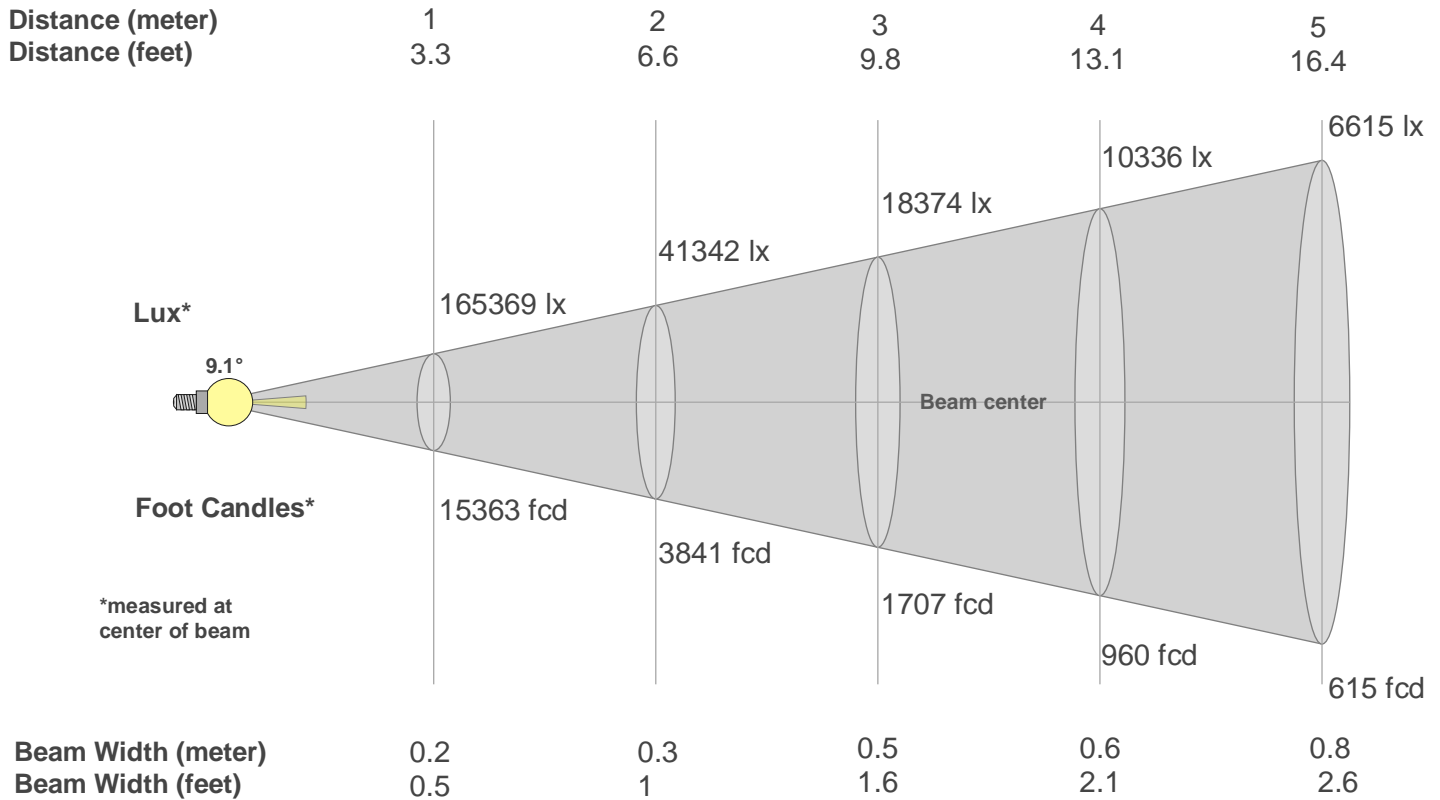
CQS: 58.0



Color Parameters

Color Temperature	Color Rendering Index	Red Component	Color Fidelity	Color Gamut	Color Quality Scale	Color Coordinate CIE 1931	Color Coordinate CIE 1931	Color Coordinate	Color Coordinate	Color Diviation from Black Body
CCT	CRI	CRI R9	TM30 Rf	TM30 Rg	CQS	x	y	u	v	Δuv
4283 K	57.8	-106.2	0.0	n/a	58.0	0.398	0.502	0.193	0.366	0.0442

Beam Details



Beam Intensities from 1-20m

m	1	2	3	4	5	6	7	8	9	10	11	12	13	14	15	16	17	18	19	20
ft	3.3	6.6	9.8	13.1	16.4	19.7	23	26.2	29.5	32.8	36.1	39.4	42.7	45.9	49.2	52.5	55.8	59.1	62.3	65.6
lx	165369	41342	18374	10336	6615	4594	3375	2584	2042	1654	1367	1148	979	844	735	646	572	510	458	413
fcd	15363.2	3840.8	1707	960.2	614.5	426.8	313.5	240.1	189.7	153.6	127	106.7	90.9	78.4	68.3	60	53.2	47.4	42.6	38.4

Intensities in 0° C-plane

0°	1°	2°	3°	4°	5°	6°	7°	8°	9°	10°	11°	12°	13°	14°	15°	16°	17°	18°	19°
165K	162K	151K	131K	101K	67K	36K	14K	3K	0K	0K	0K	0K	0K	0K	0K	0K	0K	0K	0K
100%	98%	91%	79%	61%	41%	22%	8%	2%	0%	0%	0%	0%	0%	0%	0%	0%	0%	0%	0%

Intensities in 90° C-plane

0°	1°	2°	3°	4°	5°	6°	7°	8°	9°	10°	11°	12°	13°	14°	15°	16°	17°	18°	19°
165K	162K	151K	131K	101K	67K	36K	14K	3K	0K	0K	0K	0K	0K	0K	0K	0K	0K	0K	0K
100%	98%	91%	79%	61%	41%	22%	8%	2%	0%	0%	0%	0%	0%	0%	0%	0%	0%	0%	0%

Intensities in 180° C-plane

0°	1°	2°	3°	4°	5°	6°	7°	8°	9°	10°	11°	12°	13°	14°	15°	16°	17°	18°	19°
165K	161K	150K	131K	101K	66K	35K	13K	3K	0K	0K	0K	0K	0K	0K	0K	0K	0K	0K	0K
100%	97%	91%	79%	61%	40%	21%	8%	2%	0%	0%	0%	0%	0%	0%	0%	0%	0%	0%	0%

Intensities in 270° C-plane

0°	1°	2°	3°	4°	5°	6°	7°	8°	9°	10°	11°	12°	13°	14°	15°	16°	17°	18°	19°
165K	161K	150K	131K	101K	66K	35K	13K	3K	0K	0K	0K	0K	0K	0K	0K	0K	0K	0K	0K
100%	97%	91%	79%	61%	40%	21%	8%	2%	0%	0%	0%	0%	0%	0%	0%	0%	0%	0%	0%

Beam Angle 50%	Field Angle 10%	Cutoff Angle 2,5%	Intensity Ratio in 120° Cone	Intensity Ratio in 90° Cone
9.1°	13.6°	15.6°	100.0%	100.0%